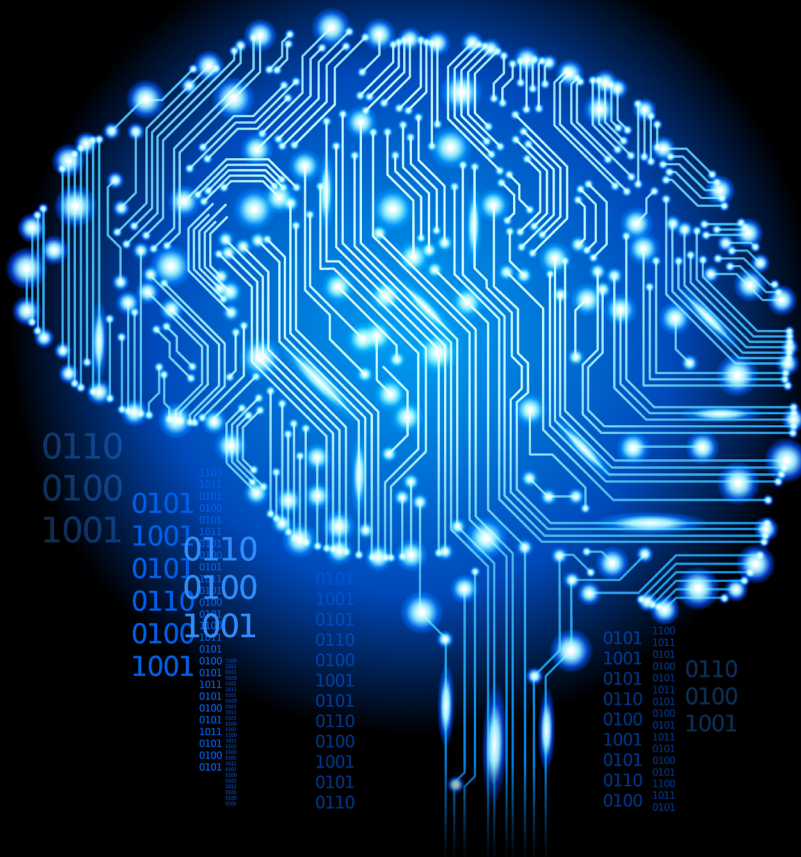


CALL FOR PAPERS



# Intelligent Computing

A SCIENCE PARTNER JOURNAL



OPEN ACCESS

[spj.sciencemag.org/icomputing](http://spj.sciencemag.org/icomputing)

# Intelligent Computing

A SCIENCE PARTNER JOURNAL

*Intelligent Computing* is an Open Access journal published in affiliation with **Zhejiang Lab** and distributed by the **American Association for the Advancement of Science (AAAS)**. The journal aims to build a platform that promotes open communication and cooperation for global science and technology professionals in the field. *Intelligent Computing* presents the latest research outcomes and technological breakthroughs to boost the development of intelligent computing science and technology. The journal publishes original research articles, review articles, editorials, and perspectives focusing on topics of particular interest, which include but are not limited to:

- Computing methodologies for machine intelligence.
- Computational technology achieved through AI-based methodologies.
- Scientific findings achieved through machine intelligence, data, and computing methodologies.

**Submit your manuscripts today!**

Learn more at: [spj.sciencemag.org/icomputing](https://spj.sciencemag.org/icomputing)

The Science Partner Journals (SPJ) program was established by the American Association for the Advancement of Science (AAAS), the nonprofit publisher of the *Science* family of journals. The SPJ program features high quality, online-only, open access publications produced in collaboration with international research institutions, foundations, funders and societies. Through these collaborations, AAAS expands its efforts to communicate science broadly and for the benefit of all people by providing top-tier international research organizations with the technology, visibility and publishing expertise that AAAS is uniquely positioned to offer as the world's largest general science membership society. Learn more at [spj.sciencemag.org](https://spj.sciencemag.org)



@SPJournals



@SPJournals



之江实验室  
ZHEJIANG LAB